

2011 Summer Camp Programs



Montessori
Schoolhouse

69 Washington St.
Keene, NH 03431

(603) 352-3301

www.mshocc.org

For Children
Ages Two Years
Through Six Years Old

Garden Adventures

June 27 - July 1

July 5 - 8

We will use our green thumbs to plant, tend, and care for the raised bed gardens and learn what helps the garden grow. Campers will pot some flowers and vegetables to take home, walk (or ride in the wagons) to the downtown farmer's market and enjoy crafts, sprinkler fun, and lots of outdoor play.
***Campers will enjoy a special worm composting demonstration by a guest.**



Frogs & Butterflies

July 11 - 15*

July 18 - 22

We will study the life cycle of frogs and butterflies and their habitats (and borrow a frog from a local pond if we can catch one!). Campers will enjoy creating their own butterflies and other craft activities, stories, games, and lots of outdoor play with sprinklers and water tables.

***On July 13th Reptiles and More will visit to present an hour long presentation that includes a tortoise, frogs and assorted lizards. (Additional fee applies)**



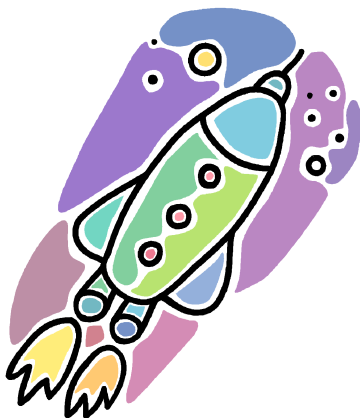
Montessori Circus

July 25 - 29*

August 1 - 5

Campers will enjoy *fun under the big top!* We will enjoy making our own masks and puppets, dress-up, face painting, hold our own circus parade, and other circus themed activities, stories, and games, plus lots of outdoor play with sprinklers and water tables.

***On July 27th NE Center for Circus Arts in Brattleboro will visit and conduct a workshop that will teach our campers juggling, tumbling and twirling with aerial fabrics followed by a live acrobatic performance. (Additional fee applies)**



3-2-1 Blast Off Into Space

August 8 - 12

August 15 - 19

We will study all aspects of Space Exploration from constellations and planets to rockets. Campers can spend time in our Montessori Schoolhouse Planetarium (created for this camp session) and participate in many other activities, stories, games, and lots of outdoor play with sprinklers and water tables.